

## Arf1

**Catalog Number:** 21030

**Gene Symbol:** ARF1

**Description:** Anti-Arf1 Rabbit Polyclonal Antibody

**Background:** ARF1 (ADP-ribosylation factor 1) is a member of the ARF super-family. ARF genes encode small GTPases that increase the ADP-ribosyltransferase activity of cholera toxin and are critical for vesicular trafficking as activators of phospholipase D. ARF1 protein is localized to the Golgi apparatus and has a central role in intra-Golgi transport.

**Immunogen:** A synthetic peptide from the internal region of Arf1 protein.

**Tested Applications:** ELISA, WB, IHC

**Recommended Dilutions:**

ELISA 1:100-1:5000

WB 1:100-1:2000

IHC 1:100-1:1000

**Concentration:** 0.2 mg/ml

**Host:** Rabbit

**Clonality:** Polyclonal

**Purity:** Purified from serum

**Format:** Liquid

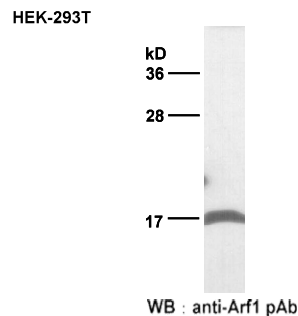
**Preservative:** no

**Constituents:** PBS (without Mg<sup>2+</sup> and Ca<sup>2+</sup>), pH 7.4, 150 mM NaCl, 50% glycerol

**Species Reactivity:** Anti-Arf1 antibody recognizes Arf1, Arf2 and Arf3 from vertebrates.

**Storage Conditions:** Store at -20°C. Avoid freeze / thaw cycles

### Western blot:



### Western blot analysis of Arf1 proteins.

HEK-293T cell lysate was used for Western blot with anti-Arf1 polyclonal antibody (Cat. # 21030).

FOR RESEARCH USE ONLY. NOT FOR DIAGNOSTIC APPLICATIONS